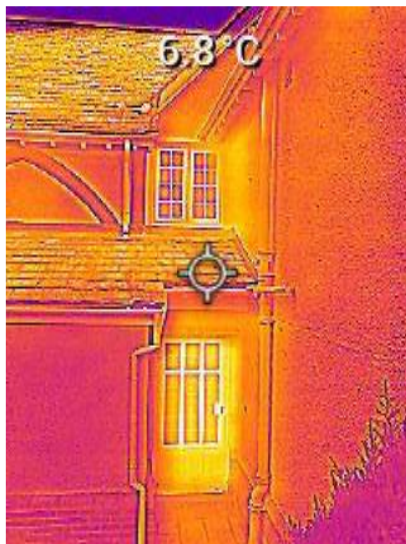


Is Your House Leaking Heat?

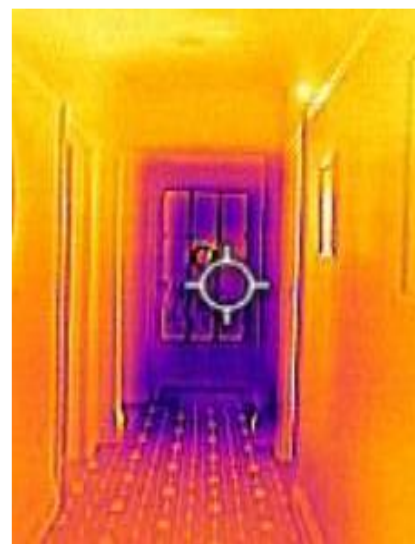
The Blackdown Hills Parish Network is working to help residents save heat and save money, the bonus is it cuts down CO2 emissions.

With energy bills rising and concerns about climate change, no one wants to waste energy from their house, but that is what we all end up doing. Thermal image cameras reveal where your precious home heat is escaping, and then you can decide how to make things better.

The Blackdown Hills Parish Network will be offering a free thermal scan of your house conducted by your Parish Council later in the year – when the weather is colder and your boiler is in action.



With an Infra-Red camera, you can literally see where the heat is escaping. These photos are infrared images of a door taken from outside and inside. In a thermal image, yellow shows hotter areas and pink/purple the cooler areas. On the outside, the door is radiating heat. On the inside, the central heating is working but it cannot keep up with the heat being lost and the door is cold. The door will carry on wasting your heat until the weather outside is warmer than the inside of the house. As we all know, keeping a house warm is expensive, wasting heat is wasting money. Also, no



matter how your home is heated, wasting heat causes extra CO₂ emissions, and that is bad for our nature, our Area of Outstanding Natural Beauty, and our world.

The Blackdown Hills Parish Network is an organisation that represents all 39 parishes that have a footprint in the Blackdown Hills. We want to help you reduce your carbon emissions, but we also want to help you save money. We have purchased an Infra-Red camera and are offering residents of the Blackdown Hills AONB an opportunity to have thermal image photos taken of their house to show where you are losing precious warmth. What you do next will be up to you. We cannot fix your home, but there are Government grants to help. There is plenty of advice already available on ways of improving your home insulation, if you know where the biggest heat loss is, you can focus your attention and money where it can be most effective. If you live within the Blackdown Hills and are interested finding out more, or having an informal survey when the weather drops below 6°C, please contact hunttheheat@gmail.com